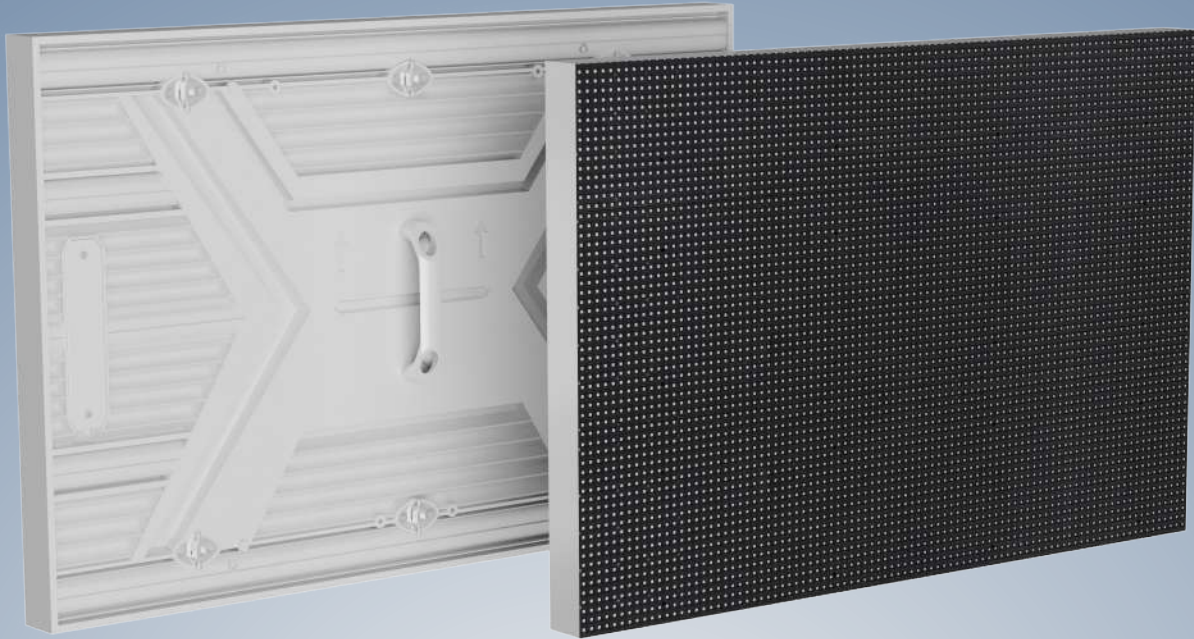


XT-Elite Series

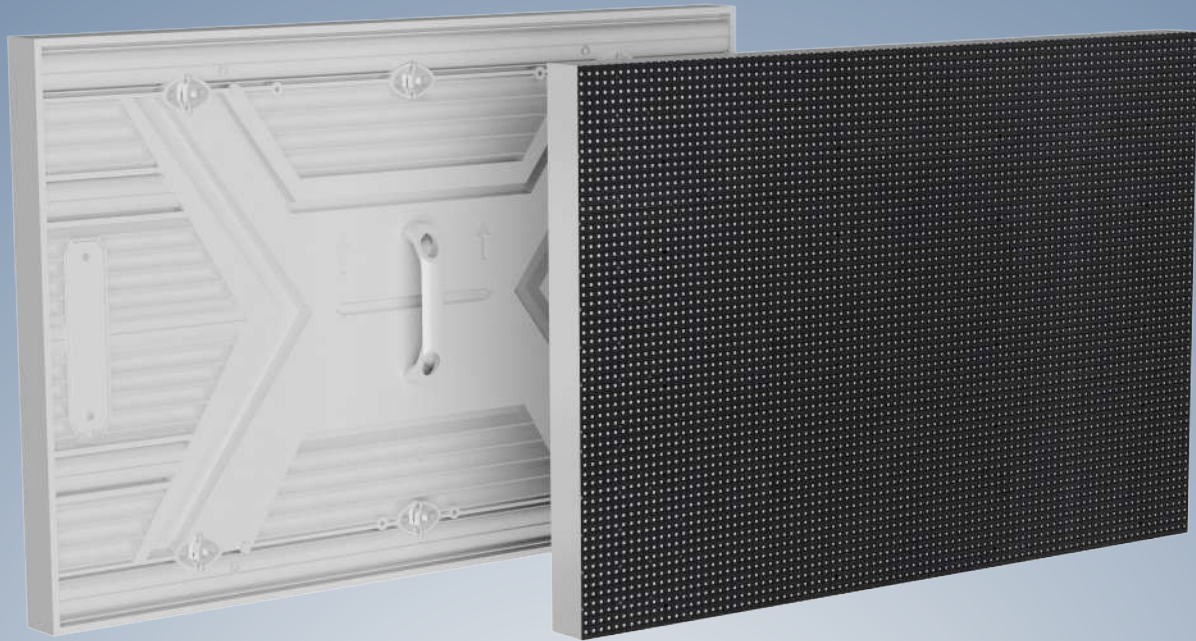
Full colour Outdoor LED display





XT-E Series – Specifications

MODEL NUMBER	XTE-PH6.66-OA	XTE-PH8-OA	XTE-PH10-OA
Pixel pitch	6.6mm	8mm	10mm
LED lamp	SMD2727 3in1	SMD2727 3in1	SMD2727 3in1
Density of pixel (m ²)	232500	15625	10000
Resolution/cabinet (pixels)	144*144	120*120	96*96
Average power/cabinet (w)	210	205	195
Max power/cabinet (w)	650	630	615
Brightness (cd/m ²)	5000–9500	5000–9500	5000–9500
Viewing angle/horizontal (degree)	120	120	120
Viewing angle/Vertical (degree)	120	120	120
Working Environment	Outdoor	Outdoor	Outdoor
Ingress protection	IP66	IP66	IP66
Panel installation type	Fixed install	Fixed install	Fixed install
LED Cabinet size	960*960	960*960	960*960
Cabinet material	Aluminum	Aluminum	Aluminum
Driving Method	1/6 scan	1/4 scan	1/2 scan
Panel weight (kgs)	20.5kgs	20.5kgs	20.5kgs
Installation Access	Front Access /Back access	Front Access /Back access	Front Access /Back access
Refresh rate	3840HZ	3840HZ	3840HZ
Grey scale/display color	65536/display 16.7M	65536/display 16.7M	65536/display 16.7M
frame frequency	≥60HZ	≥60HZ	≥60HZ
Control system	Colorlight and Novastar	Colorlight and Novastar	Colorlight and Novastar
System Operation Platform	Windows	Windows	Windows
Malfunction do rate	<0.001	<0.001	<0.001
Earth leakage current	<0.01mA	<0.01mA	<0.01mA
Working	working-30°C -60°C	working-30°C -60°C	working-30°C -60°C
Storage temperature	storage-40°C -85°C	storage-40°C -85°C	storage-40°C -85°C
AC Input Voltage (v) Frequency (Hz)	90~240 VAC 50/60 HZ	90~240 VAC 50/60 HZ	90~240 VAC 50/60 HZ
Operating Humidity and Storage Humidity (RH)	10%~95%	10%~95%	10%~95%
Certifications	CE,ROSH,FCC	CE,ROSH,FCC	CE,ROSH,FCC
Warranty	3years	3years	3years



XT-E Series – Specifications

MODEL NUMBER	XTE-PH5-OB	XTE-PH5.7-OB	XTE-PH6.6-OB
LED cabinet Size	960 *960 mm	960 *960 mm	960 *960 mm
Pixel Pitch	5mm	5.7mm	6.6mm
LEDs	SMD2727	SMD2727	SMD2727
Weight	20.5KGS	20.5KGS	20.5KGS
Density of pixel	40000 Pixel/m ²	30625Pixel/m ²	22,500 Pixel/m ²
Resolution/Cabinet	192pixel*192pixel	168pixel*168pixel	144pixel*144pixel
viewing angle/horizontal	120°	120°	120°
Viewing angle/Vertical	120°	120°	120°
Average power/Cabinet (W)	210	210	210
Max power/Panel (W)	650	650	650
Driving Method	1/8 Scan	1/7 Scan	1/6 Scan
Refresh rate	≥3840HZ	≥3840HZ	≥3840HZ
Brightness	≥8,000 cds/m ²	≥8,000 cds/m ²	≥8,000 cds/m ²
Working environment	Outdoor	Outdoor	Outdoor
Waterproof	IP66	IP66	IP66
Grey scale/display color	65536/display 16.7M	65536/display 16.7M	65536/display 16.7M
frame frequency	≥60HZ	≥60HZ	≥60HZ
Brightness adjustment	Manual R.G.B each color 256,automatic 8 grades are adjustable	Manual R.G.B each color 256,automatic 8 grades are adjustable	Manual R.G.B each color 256,automatic 8 grades are adjustable
Control system	Colorlight and Novastar	Colorlight and Novastar	Colorlight and Novastar
System Operation Platform	Windows	Windows	Windows
Average no Failure time	≥10000hrs	≥10000hrs	≥10000hrs
Lifetime of Led	≥100000hrs	≥100000hrs	≥100000hrs
Malfunction do rate	< 0.0001	< 0.0001	< 0.0001
Working Voltage	120V to 240V AC	120V to 240V AC	120V to 240V AC
Earth leakage current	< 0.01mA	< 0.01mA	< 0.01mA
working / Storage temperature	working -30°C ~ 60°C storage -40°C ~ 85°C	working -30°C ~ 60°C storage -40°C ~ 85°C	working -30°C ~ 60°C storage -40°C ~ 85°C



Full colour Outdoor LED display is widely used in advertising, transportation, school, media, government, finance, telecommunications, etc.

XT-E Series

XT-E series full color outdoor display is a new generation of LED display. Cabinet is made of aluminium and have a good overall sealing. Cabinet is high-strength and slim, which ensures the connection of the screen body and the load-bearing of the whole screen. Whole cabinet is fully waterproof, have IP rating IP67. Electronics are fully sealed inside cabinet and ensure our products can work in harsh environment.

Product characteristics:



Patented Products



High Brightness



Long Life-span



Waterproof Rate Ip66



High Stability



International Approvals



Effective Heat Dissipation



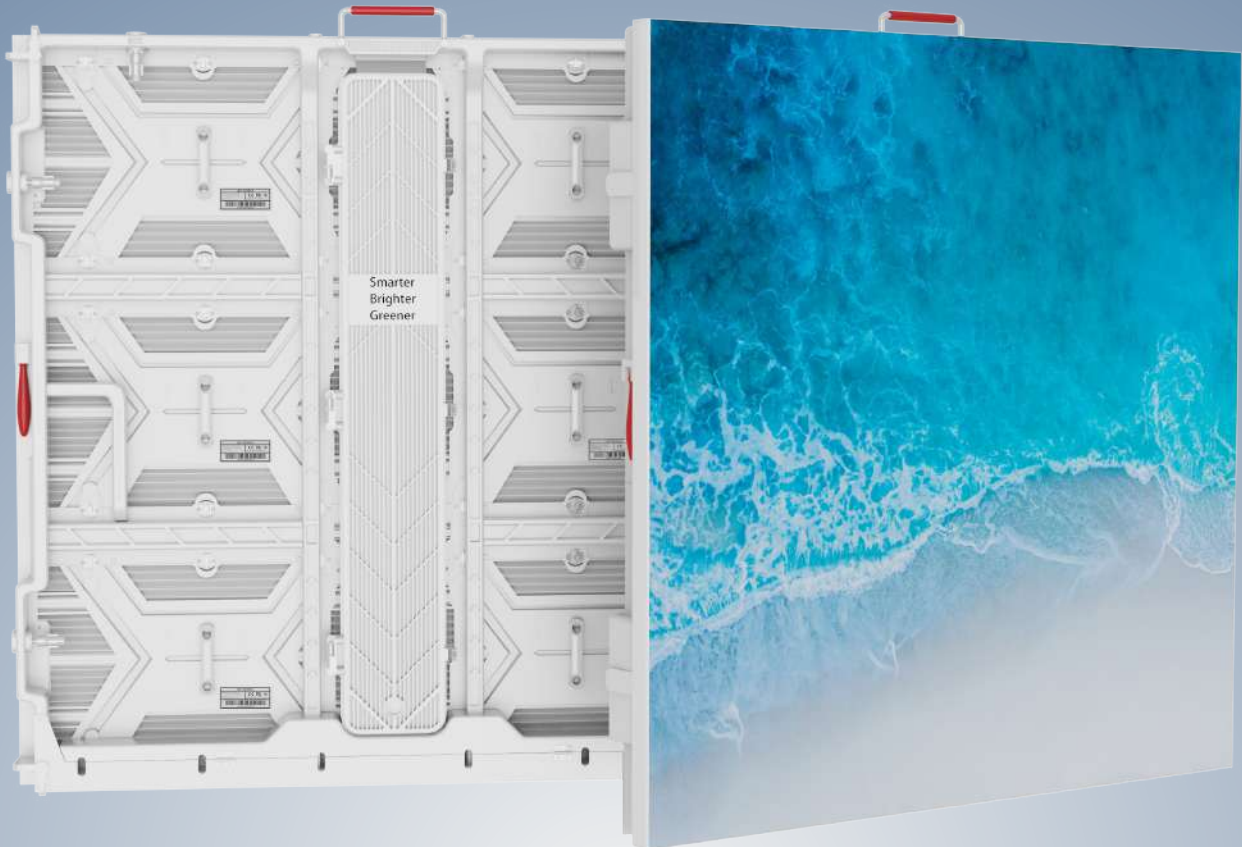
Light-weight



High Definition



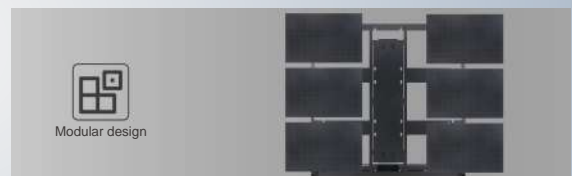
Both Front and Rear Maintenance



Automatic brightness adjustment

✓ High Brightness

With brightness up to 9000cd/m^2 , LED display can have clear visual effect under direct sunlight. The brightness can be adjusted automatically according to ambient brightness so as to get the best visual effect with clear display pictures in day-time, bright and colorful in night-time and eye-catching at long viewing distance.



Modular design

✓ 3*2 Modular design

LED display uses modular design which has flexibility, the size and resolution can be based on demand; Free combination and expansion, it is more convenient to maintain. A single module failure do not affect other modules, easy to transport and install, and economical and energy saving.



Front / Rear Service

✓ Modular Design Front/rear Maintenance

The unique structure design make the cabinet can be quickly disassembled by simple tools and convenient operations. All components inside can be maintained from the front / rear.

Front maintenance: make the screen stick to wall of building and save space.

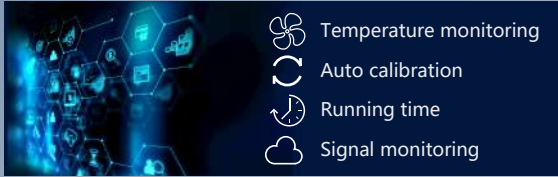
Rear-maintenance: Get higher protection level, reserve maintenance access, service become more convenient and efficient.



Hidden cables

✓ Hidden cables

The hidden wires makes the LED screen look cleaner and more beautiful, and effectively protects the wires from damaged, exposed wire is easily affected by the external environment, resulting in wire aging, by hiding the wire, can increase safety, protect the wire to extend the service life High LED screen stability and reliability, back maintenance is also more convenient.



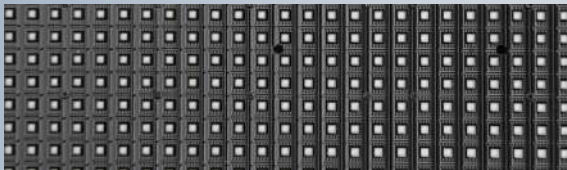
✓ Smart Module

The smart module can store its own calibration data. After the module is replaced, the calibration data of the module will be automatically updated to ensure the uniformity of the display. At the same time, the system can detect working status of major parts of the display and upload the results to server.



✓ Colorful Pictures

Display adopts three basic color (RGB) imaging technology to display red, orange, yellow, white, green, blue, etc., up to 4.4 trillion colors. Its visual effect can match human retina and almost meet all requirements in display area. Color temperature 2500k-10000k adjustable meet the requirements of people or external equipment for all occasions.



✓ Common cathode LEDs and Energy saving

Common cathode LED is an energy-saving technology with high light efficiency, long life and low temperature. Advantages such as less heat, and less energy consumption



✓ Working In Harsh Environment

Waterproof, damp proof, dust proof, lightning protection, anti-electromagnetic interference, anti UV, Extremely high and low temperature or other severe environments, our led mesh display remains good performance.



✓ Aluminium controller box has excellent heat dissipation

Aluminum control box through advanced structural design to achieve good ventilation, corrosion resistance, waterproof and heat dissipation. Can protect the internal electrical equipment from the external environment and effectively extend the equipment lifespan.



✓ Extruded aluminium cabinet and Die-casting cabinet for choices

LED display uses modular design which has flexibility, the size and resolution can be based on demand; Free combination and expansion, it is more convenient to maintain. A single module failure do not affect other modules, easy to transport and install, and economical and energy saving.

Professional LED Display Manufacturer



Scan QR code to get details

ONLY LED

Shenzhen Only Optoelectronic Technology Co., Ltd.
Add: 18th Bldg Hongfa industrial park Tangtou ave. Shiyuan st.
Bao'an district Shenzhen city, Guangdong, China
Tel: +86-136-8251-1977 (Whatsapp & Wechat)
Fax: +86-755-27651161
Email: info@onlyled.com
Web: www.onlyled.com



CE FC RoHS